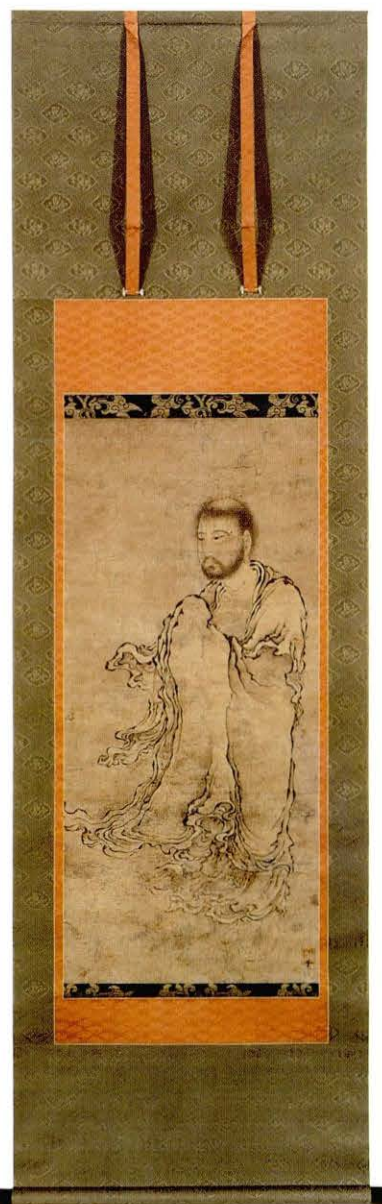


出山釈迦図

Shussan Shaka-zu



147 出山釈迦図 (修理後)
Shussan Shaka-zu (after restoration)



148 出山釈迦図 (修理前)
Shussan Shaka-zu (before restoration)

出山釈迦図

〈絵画〉

作品名 : 出山釈迦図

作者 : 祥琳

所蔵者 : ロスアンジェルス カウンティ ミュージアム

所蔵番号 : AC1993.135.1

法量 : 本紙 縦 82.4cm 横 37.2cm

表装 縦 173.5cm 横 52.1cm

修復担当者

遠藤得水軒

損傷状態

画面下方に横折れが数本ある。本紙全体に小さな浮きが広がっている。本紙の欠失部分に大きな補紙があてられている。表面各所に茶色および黒の補彩が施され、画面全体が暗い色調になっている。

本修復では、本紙の保存修理を行い同系の仏画表具形式の掛軸装に改装する。裏打紙を取り替え、本紙以外の表装裂と軸首は再使用しない。太巻軸と保存箱を新調する。

修理内容概説

- 1、本紙の欠失部分の繕いおよび皺による重なりを訂正した。
- 2、旧裏打紙を除去し、新規の裏打ちを行った。
- 3、表装裂と軸首を新調した。
- 4、仏面表具形式の掛軸装に改装した。
- 5、桐材の太巻きと保存箱を新調した。



159 出山釈迦図 (修理後)
Shussan Shaka-zu (after restoration)



160 出山釈迦図 (修理前)
Shussan Shaka-zu (before restoration)

Shussan Shaka-zu

Name of the Object: *Shussan Shaka-zu*

Name of the Artist: Shorin

Name of the Owner: Los Angeles County Museum

Inventory Number: AC1993.135.1

Measurements: Painting H 82.4cm L 37.2cm

 Mounting H 173.5cm L 52.1cm

Conservation Studio: EndoTokusuiken

Condition of Damage

There were several horizontal creases on the lower surface. Small liftings were observed on the entire painting. A large piece of paper had been glued to the missing portions of the painting. Brown and black retouchings had been applied at several places on the surface, making the overall tone of the painting dark.

It was decided that the painting would be restored and remounted in a *butsuga* mounting style for a hanging scroll. All linings were exchanged. It was decided that the mounting fabric and the roller knobs would not be re-used. A roller clamp and a storage box were newly made.

Outline of the Restoration Process

1. Missing parts of the painting were treated and creases were straightened.
2. Previous linings were removed and the painting was relined.
3. Mounting fabric and roller knobs were selected.
4. The painting was remounted in a *butsuga* style for a hanging scroll.
5. A roller clamp and a storage box were made anew of paulownia wood.